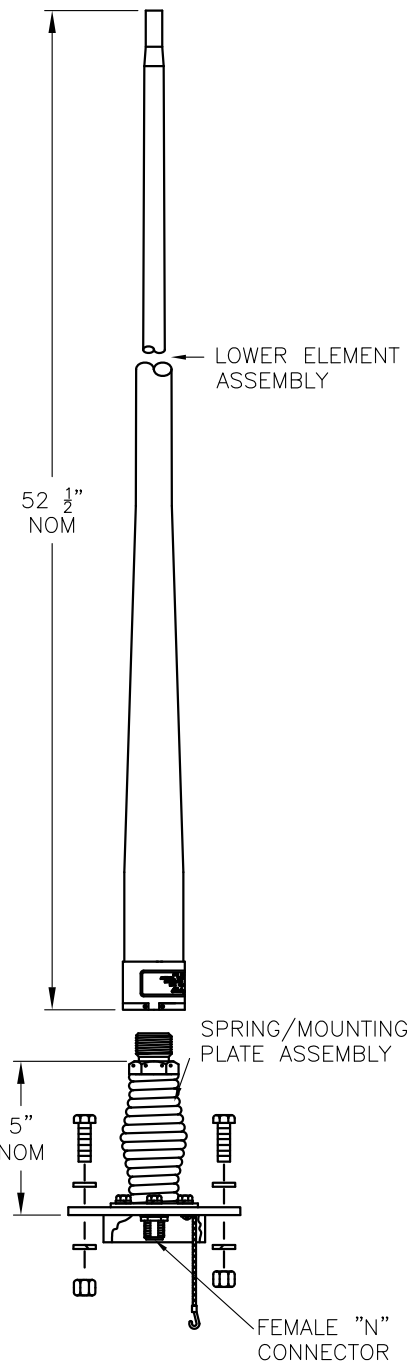
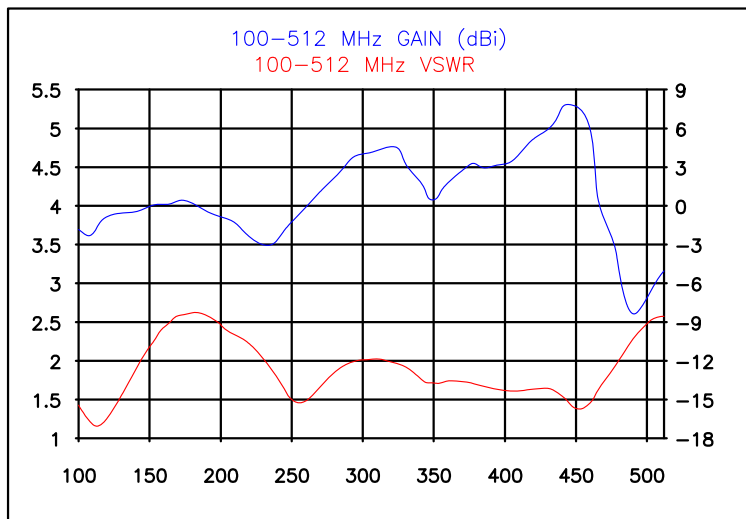
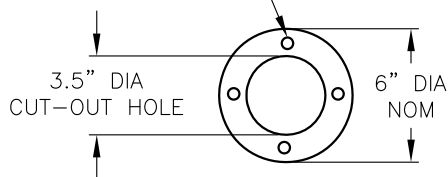


SPECIFICATION

FREQUENCY: 100-512 MHz
 INSTANTANEOUS BANDWIDTH: 412 MHz
 POLARIZATION: VERTICAL
 INPUT IMPEDANCE: 50 OHMS NOMINAL
 INPUT POWER: 75 WATTS CW
 RF CONNECTOR: 100-512 MHz = TYPE N STANDARD
 VSWR: AVERAGE 3.0:1 OR LESS
 GAIN: 100-512 MHz = -8 TO +8 dBi
 WEIGHT: 7 LBS APPROXIMATE
 WIND RATING: 70 MPH
 COLOR: GREEN, TAN, BLACK



FOUR .438" DIA HOLES
 SPACED 90° APART ON
 4.5" BOLT HOLE CIRCLE



BOLT HOLE MOUNTING PATTERN

DO NOT SCALE DRAWING
 UNLESS OTHERWISE SPECIFIED
 DIMENSIONS ARE IN INCHES.
 .X = ± TOL_X
 .XX = ± TOL_XX
 .XXX = ± TOL_XXX
 ANGLES = ± TOL_ANG



DRAWN HRJ	ENG APPROVAL:	SCALE -	DATE 12/3/10
BROADBAND 100-512 MHz			
PART#		4265BB	

REV	DESCRIPTION	BY	DATE
-----	-------------	----	------