

Thank you for purchasing a Shakespeare antenna product. Customer comments are welcome. Before installing, please study the diagram and check parts supplied against those listed.

IMPORTANT! Please read all instructions before installing.

The Style 483 Clamp Set is a set of four clamps which can be used for mounting antennas and masts either vertically or horizontally to a rail. The clamps easily adapt to various diameters of antennas and rails.

Tools required: Pliers or wrench

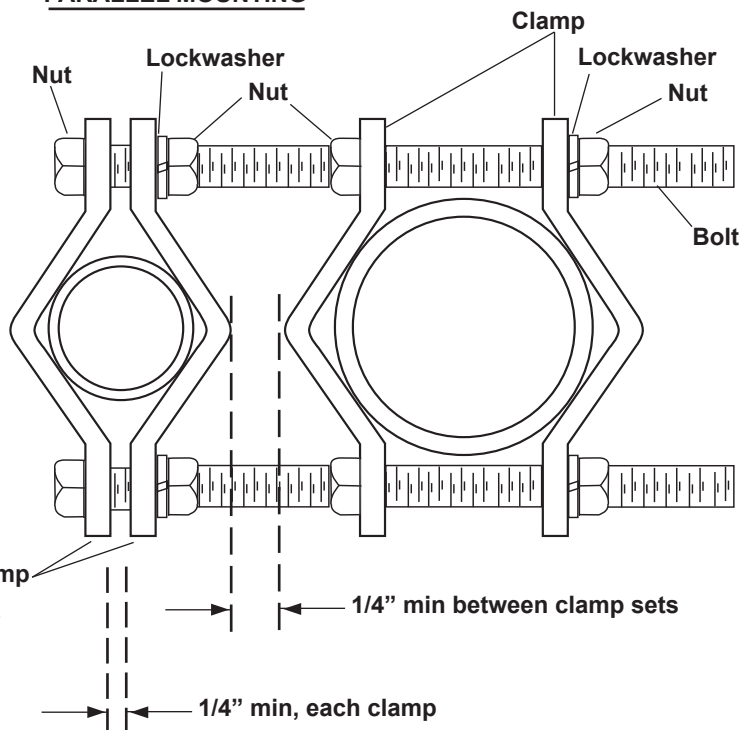
Installation Instructions

Use the bolts and lockwashers provided to secure the antenna or masts and rail between the halves of the clamps. See the diagrams for detail of vertical and horizontal mounting.

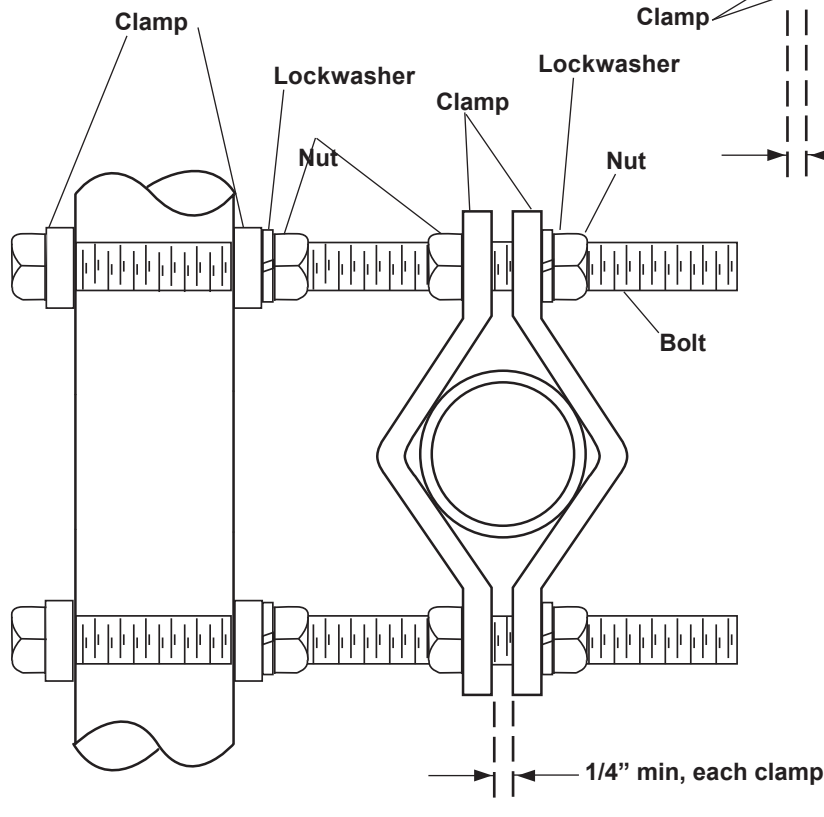
When installation is complete, the clamps must be a minimum of 1/4" apart, and the halves of each clamp must be 1/4" apart, as illustrated.

- | Supplied Parts | |
|----------------|--------------|
| 8 | Clamp halves |
| 4 | Bolts |
| 16 | Nuts |
| 8 | Lockwashers |

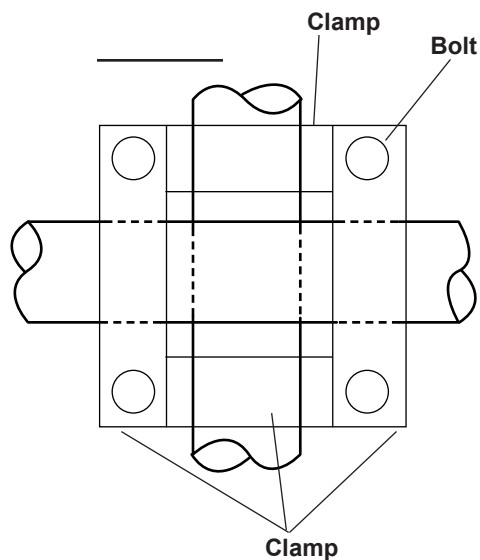
PARALLEL MOUNTING



PERPENDICULAR MOUNTING



SIDE VIEW



35-90-0132-00

Shakespeare Electronic Products Group

U.S. Operations: 6111 Shakespeare Rd. · Columbia, SC 29223 · 803-227-1590 · Fax: 803-419-3099 · www.shakespeare-marine.com
 U.K. Operations: Enterprise Way, Fleetwood, Lancashire, FY7 8RY, England · +44 (0) 1253 858787 · Fax: +44 (0) 1253-859595 · www.vtronix-antennas.com