

Thank you for purchasing a Shakespeare antenna product. Customer comments are welcome. Before installing, please study the diagram and check parts supplied against those listed.

IMPORTANT! Please read all instructions before installing.

The Style 4715 Mounting Clamp Set comprises two clamp assemblies which can be used to attach an antenna of 1” to 2” in diameter to a mast of 1” to 2” in diameter. The included rubber pads (Gaskets) can be used to cushion the antenna when installation requires clamping to the antenna radome.

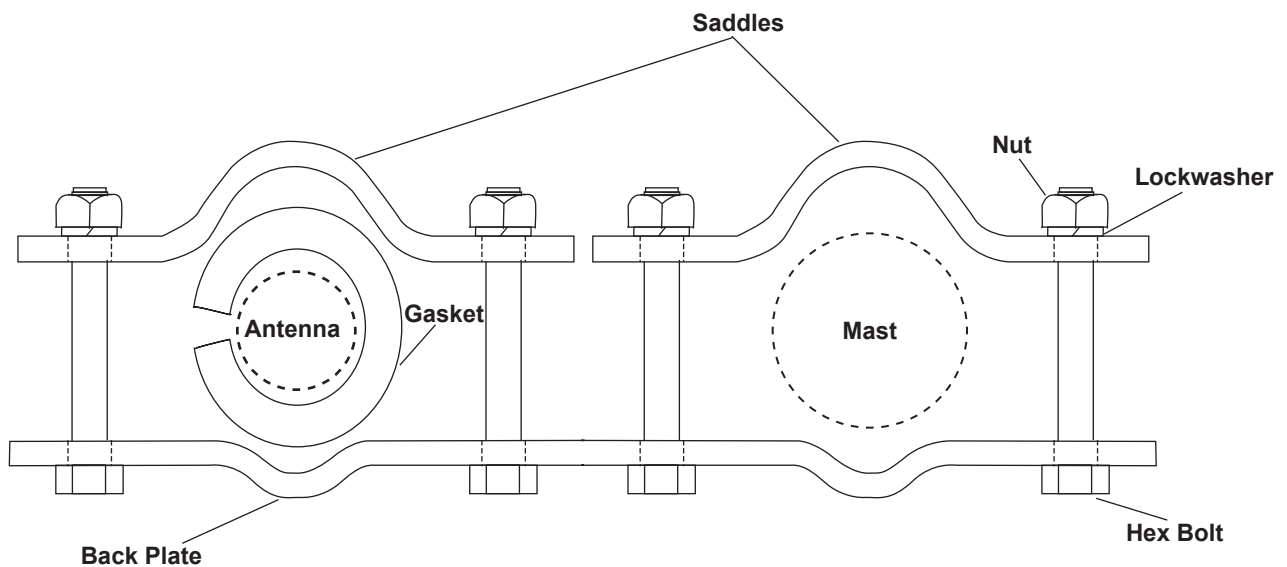
Supplied Parts	
2	Back Plates
4	Saddles
2	Gaskets
8	Hex Bolts
8	Hex Nuts
8	Lockwashers

Tools required: Pliers or wrench

Installation Instructions

Choose a mounting location that is as free as possible of obstructions.

1. Assemble two Saddles to Back Plates using 4 bolts, 4 nuts, and 4 lockwashers, as shown in the diagram.
2. If the Gasket is needed, first trim it to the desired length, using the antenna as a guide, then position the Gasket between the antenna and the clamp set, as shown in the diagram.
3. Tighten all bolts snugly. Do not over-tighten.



35-90-1399-00

Shakespeare Electronic Products Group

U.S. Operations: 6111 Shakespeare Rd. · Columbia, SC 29223 · 803-227-1590 · Fax: 803-419-3099 · www.shakespeare-marine.com
 U.K. Operations: Enterprise Way, Fleetwood, Lancashire, FY7 8RY, England · +44 (0) 1253 858787 · Fax: +44 (0) 1253-859595 · www.vtronix-antennas.com