

Thank you for purchasing a Shakespeare antenna product. Customer comments are welcome. Before installing, please study the diagram and check parts supplied against those listed.

IMPORTANT! Please read all instructions before installing.

The Style 4328 is a two-piece, side-feed HF/SSB antenna of 28' (8.5 m) overall length with self-supporting, flange-mount base. The antenna's conductors run full-length. It supports input power up to 1 KW, and can be used at 1.6 MHz and MF frequencies at reduced power.

Tools required: Adjustable wrench.

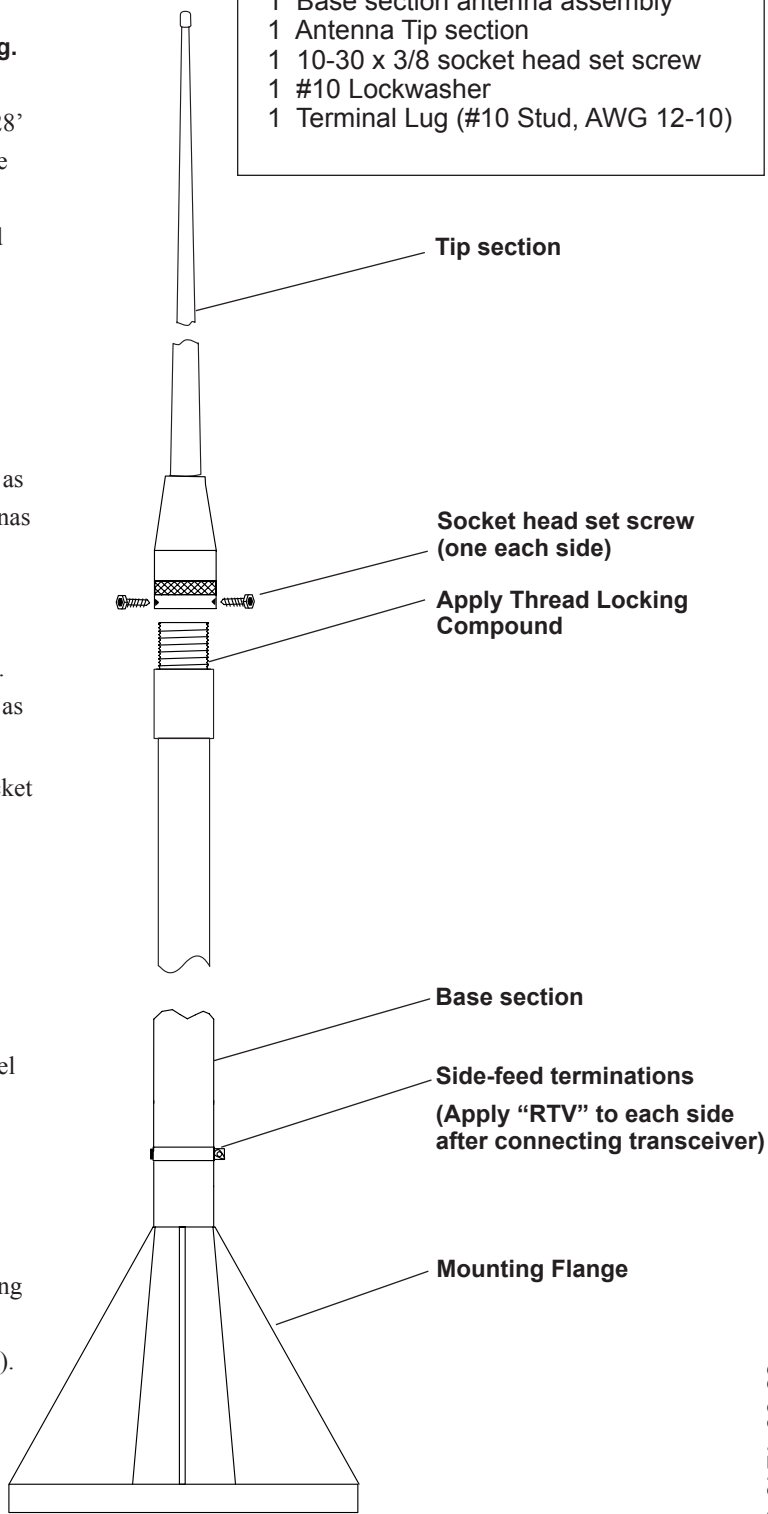
Installation Instructions

Choose a mounting location that is as high as feasible, as free as possible from obstructions, and as far as possible from other antennas and strong sources of RF.

1. Apply a few drops of Loctite 242 Thread Locking Compound (not supplied) to the threads on the Base section's upper ferrule. Assemble the antenna's two sections, including the lockwasher as shown in the diagram, and securely tighten.
2. Apply Thread Locking Compound (not supplied) to the two socket head set screws and install in the Tip section's ferrule. Tighten securely.
3. Using the Base Flange as a template to mark the locations, drill four small pilot holes for fasteners appropriate to the mounting surface.
4. Secure the antenna to the mounting surface with 1/2" fasteners, washers, and lockwashers (not supplied). Use only stainless steel hardware. We recommend tightening the bolts to 50 ft.-lbs.
5. Caulk around both side-feed terminations with "RTV" (not supplied) to prevent water entry.

SSB antennas and transceivers require adequate grounding systems. Follow the radio manufacturer's instructions for connecting this antenna to your SSB radio system. The terminal lug supplied accommodates AWG 12-10 stranded, insulated cable (not supplied).

Supplied Parts	
1	Base section antenna assembly
1	Antenna Tip section
1	10-30 x 3/8 socket head set screw
1	#10 Lockwasher
1	Terminal Lug (#10 Stud, AWG 12-10)



Shakespeare Electronic Products Group

U.S. Operations: 6111 Shakespeare Rd. · Columbia, SC 29223 · 803-227-1590 · Fax: 803-419-3099 · www.shakespeare-marine.com
 U.K. Operations: Enterprise Way, Fleetwood, Lancashire, FY7 8RY, England · +44 (0) 1253 858787 · Fax: +44 (0) 1253-859595 · www.vtronix-antennas.com