

HOW TO INSTALL F-CONNECTORS ON CABLE

To install the F-connectors, strip the ends of the RG-59 cable as shown in Figure A. (Note the ends of the original 30' cable have been factory pre-stripped for convenience.)

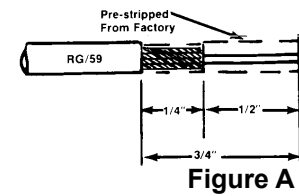


Figure A

Pull back braid over jacket. Make sure no braid touches center conductor. Figure B.

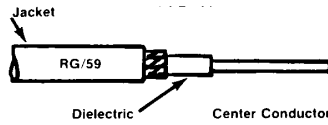


Figure B

Screw the F-connector onto the cable jacket until the center conductor extends 1/8" past end of connector. Figure C.

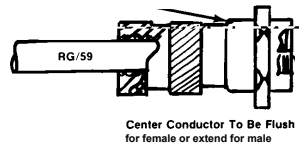


Figure C

RECOMMENDATIONS FOR INSTALLING CABLE

Minimum Bending Radius: 3" for RG-59. Tighter bends will cause shorts and change impedance.

Pulling Tension: 75 pounds maximum. Leave no tension on cable after it is installed.

Staples or Clamps: The use of flat staples with coax cable is damaging to the cable. Only round headed staples can be used. Any clamps or securing devices used with coax should grip the cable evenly about the circumference without crushing the cable.

Exposure to High Heat: Maximum temperature limit is 176° F (80° C). Keep cable away from heating vents, engine compartments and engine exhaust pipes.

Crushing: Coax should not be installed in a manner that would allow it to be crushed. It should not be stuffed or wedged into areas where the cable could be pinched by the flexing of the boat hull or cabin.

Exposure to Moisture: The cable jacket will withstand most outdoor environments. However, connections and splices must be sealed against water entry.

Shakespeare[®]

SINCE 1897

Model 2025-CP TV CONTROL BOX

NOTE: Please read all instructions before beginning installation!

WARNING!

To prevent FIRE or SHOCK HAZARD, avoid exposure of control panel to moisture.

CP2025A HARDWARE KIT

- (1) 2025-CP Control Box
- (1) Plug-in Transformer
Input: 120 VAC, 60 Hz
Output: 16 VDC, 140 ma
- (2) Insulated Ring Terminals
- (2) VB-1000 Voltage Blocks
- (1) 2-Way Splitter
- (4) Twist-on Type F-Connectors
- (4) #6 5/8" Screws
- (4) Insulated Quick-Disconnect Terminals
- (1) 5' 18 GA Insulated Wire
- (4) 1" Velcro Strips

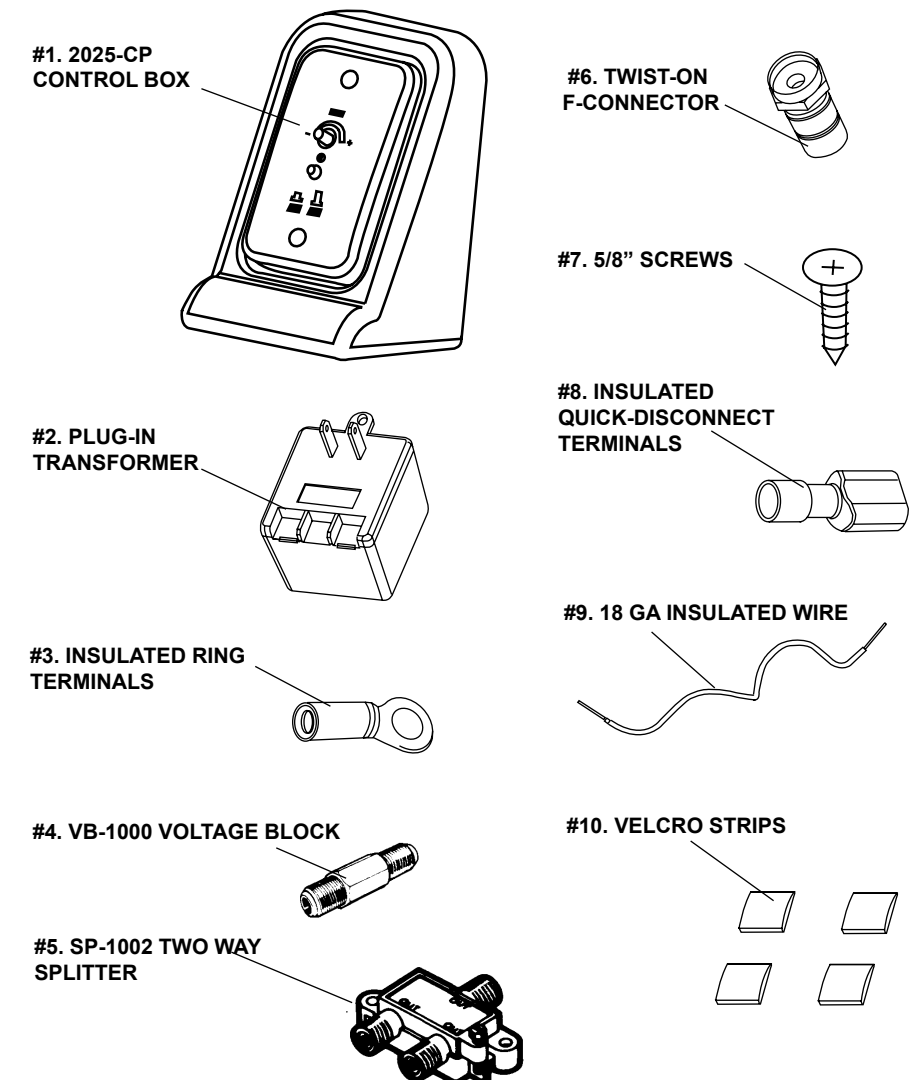
TOOLS NEEDED

- #2 Phillips screwdriver
- 7/16" wrench
- Crimping tool
- Medium slot screwdriver
- Wire stripper

REQUIRED ITEMS NOT INCLUDED IN THIS KIT

- FOR TWO OR MORE TV SET SYSTEMS
- (1) PS-9381 Power Supply

NOTE: VB-1000 & SP-1002 are Winegard model numbers.

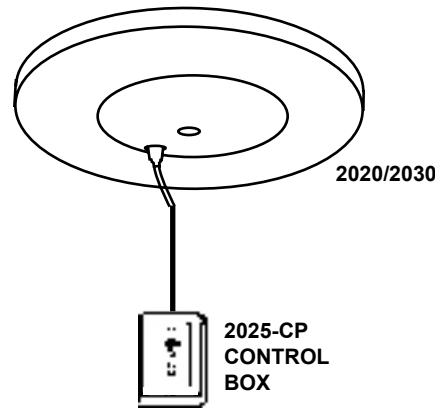


Shakespeare[®]

SINCE 1897

Shakespeare Electronic Products Group
6111 Shakespeare Rd., Columbia, SC 29223

1. Adding a 2025-CP to an existing Seawatch® 2020 or 2030 TV antenna system.



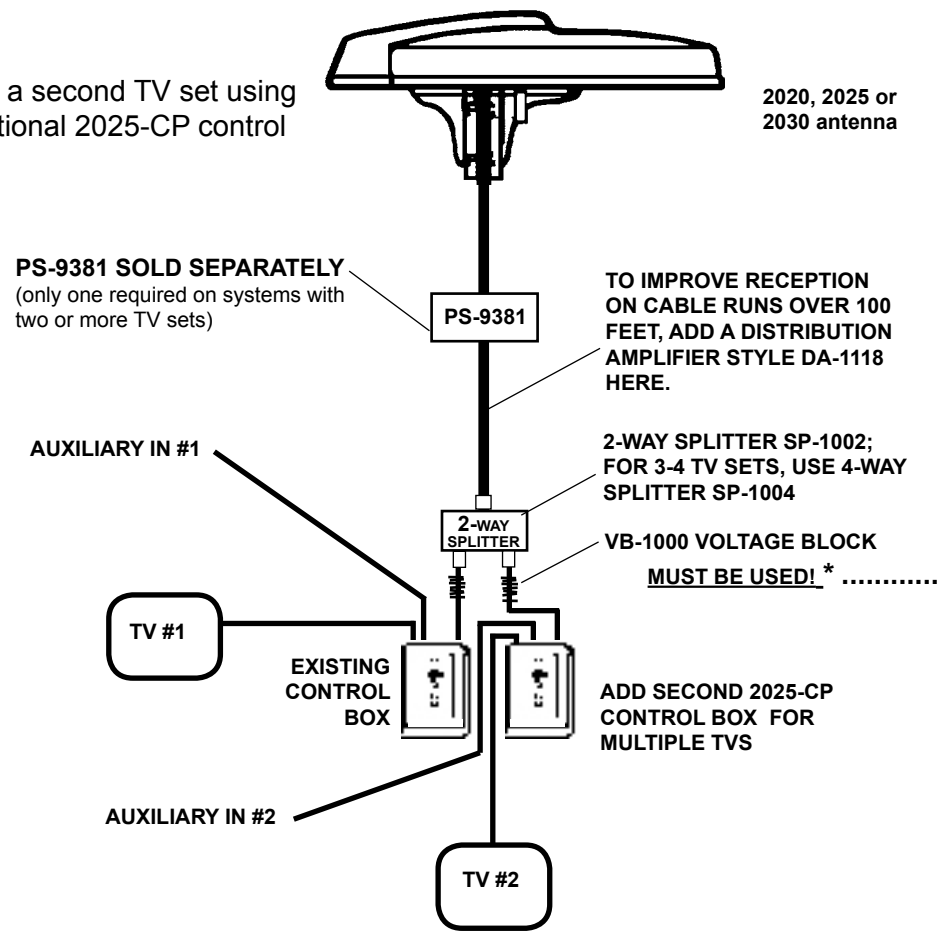
FOR ONE TV SET:

The CP2025A control box replaces the existing SeaWatch® PS-9381 power supply.

FOR TWO OR MORE TV SETS:

Follow the instructions below in Section 2.

2. Adding a second TV set using an additional 2025-CP control box.



2020, 2025 or 2030 antenna

PS-9381 SOLD SEPARATELY (only one required on systems with two or more TV sets)

TO IMPROVE RECEPTION ON CABLE RUNS OVER 100 FEET, ADD A DISTRIBUTION AMPLIFIER STYLE DA-1118 HERE.

2-WAY SPLITTER SP-1002; FOR 3-4 TV SETS, USE 4-WAY SPLITTER SP-1004

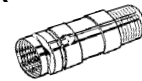
VB-1000 VOLTAGE BLOCK **MUST BE USED!** *

ADD SECOND 2025-CP CONTROL BOX FOR MULTIPLE TV'S

For Two TV Sets
The supplied SP-1002 two-way splitter, and two VB-1000 voltage blocks must be used.

For 3 or 4 TV Sets
Use an SP-1004 four-way splitter, and a VB-1000 voltage block at each output of the four-way splitter, even if only three outputs are used! (These items are sold separately)

VB-1000 VOLTAGE BLOCK *



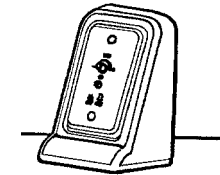
* NOTE: Failure to use the VB-1000 voltage block as shown may cause serious damage to the antenna system.

MOUNTING THE CONTROL BOX:

You have two options:

OPTION A: Set Top-Mounted

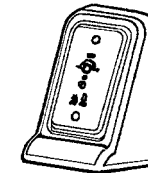
Secure the control box using the velcro strips (#13) provided.



OPTION B: Flush-Mounted

Detach wall plate from control box case.

Cut hole in wall large enough to accommodate the cable connections. Pull cables and power wires through wall.



CONNECTING CONTROL BOX

Connections on the back of the control box are clearly marked.

WARNING
DO NOT CONNECT TO BOAT'S AC OR DC POWER SUPPLY until all other connections on the control box are completed.

1. The 5 ft. 18 GA power wire (#7) provided has a + (red) wire and - (black) wire. Crimp ring terminals (#11) on one end of power wire. Connect two insulated quick-disconnect terminals (#12) to other end. Connect the end with the quick-disconnect terminals to the back of the control box, **EXACTLY AS SHOWN** below. Connect the end with the ring terminals to the appropriate + (red) and - (black) terminals on the 117 VAC plug-in transformer (#6), below.

2. There are three coax cable connections on the back of the control box — Antenna, TV Set and Auxiliary (for cable, VCR, satellite, etc.). Attach cable from antenna to the antenna connector on the control panel. If an auxiliary source will be used, connect it now. Connect the TV cable to the back of the control panel. See below for correct connections.

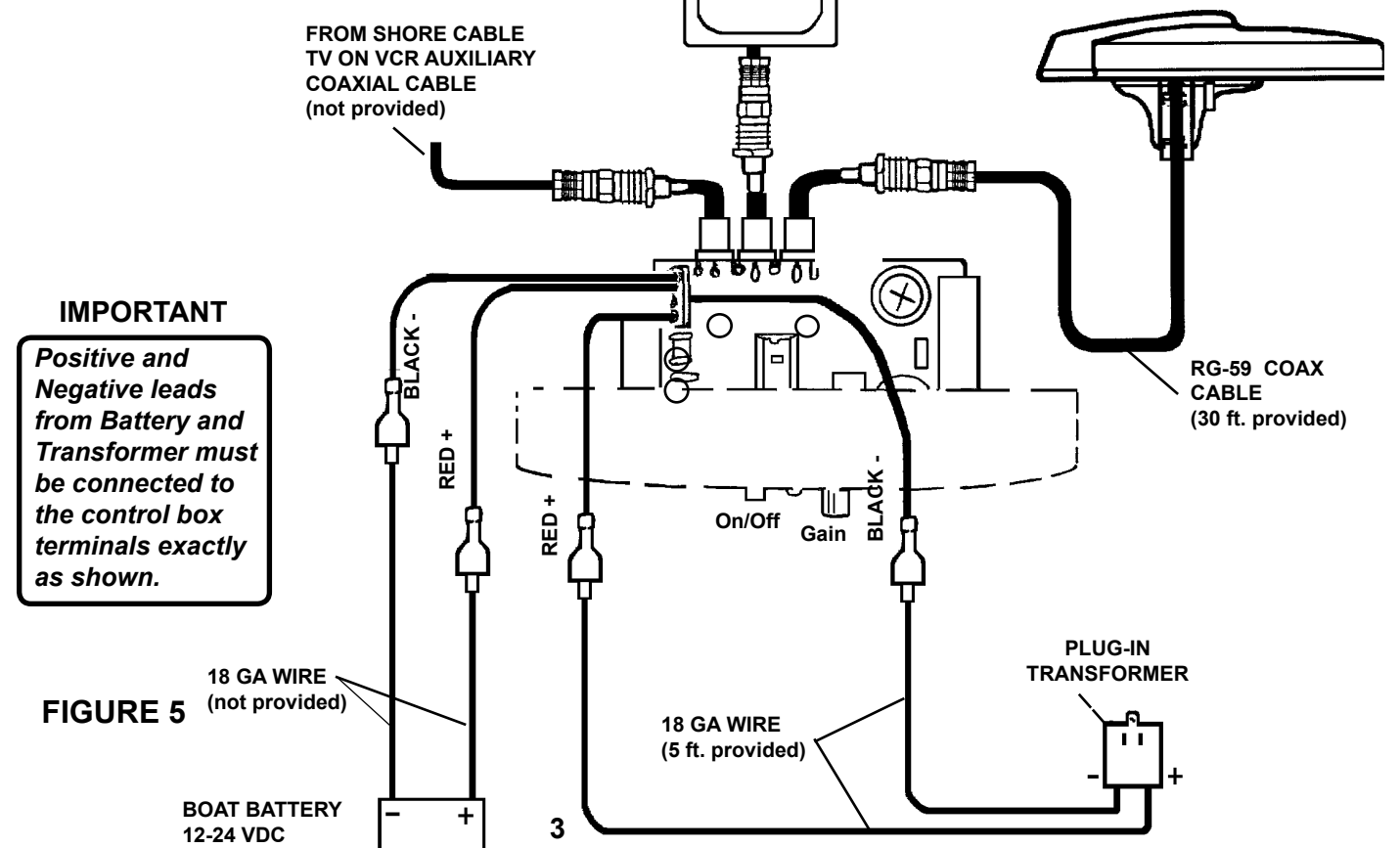
3. To connect a 12-24 VDC power source to the back of the control box, install two (#12) quick disconnect terminals on an 18-ga. insulated wire (not provided). Be sure to observe correct polarity when making these connections. See Figure 5.

NOTE: Power switches automatically between 117 volts AC (wall power source) and 12-24 volts DC (boat battery) as needed.

4. Plug transformer into AC receptacle. Use the receptacle cover plate screw to secure the transformer to the AC receptacle.

5. For antenna reception, push in the On/Off button on the front of the control panel. The Red LED will light on the control panel and on the bottom of the antenna. For auxiliary reception, the button should be out. No red light on control panel or antenna.

6. Turn on the TV. If you have a weak signal, turn the gain knob on the front of the control panel clockwise (up). If you have a strong signal, turn counterclockwise (down). Use the least amount of gain necessary for good reception.



IMPORTANT
Positive and Negative leads from Battery and Transformer must be connected to the control box terminals exactly as shown.

FIGURE 5